

USE OF GIS IN REVENUE ENHACEMENT



KINONDONI MUNICIPAL COUNCIL

Presented by Edgar N. Jeremani

INTRODUCTION

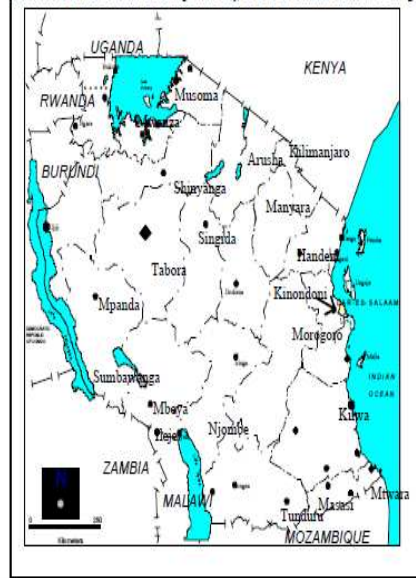
Kinondoni Municipal Council is one of the three Municipalities in Dar es Salaam City.

The Municipality is located on the west of the Indian Ocean Coastline and covers 531 kilometer square of land that includes offshore islands. It also have four division namely, Kinondoni, Magomeni, Kibamba and Kawe with 34 wards and 171 sub wards.

NATIONAL SETTING



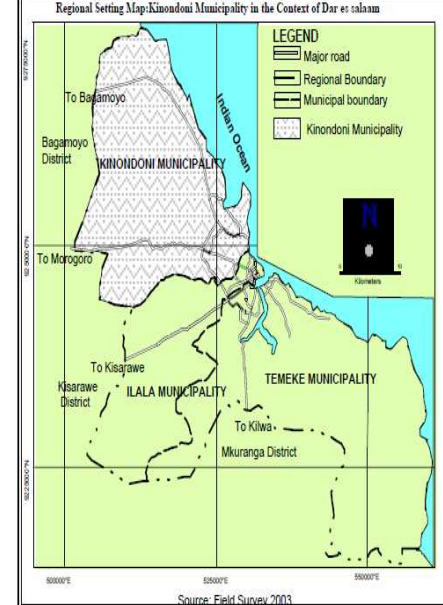
Kinondoni In the context of Metropolitan city of Dar es Salaam: National Setting



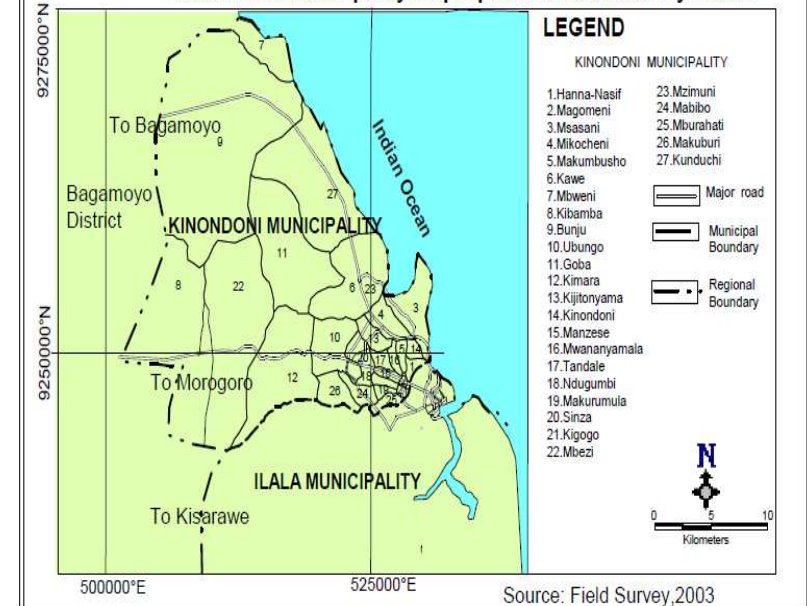
REGIONAL SETTING



Regional Setting Map: Kinondoni Municipality in the Context of Dar es Salaam



Kinondoni Municipality Map: Spatial Distribution by wards



MAIN CHALLENGE

- Property rates constitute a substantial part of the total revenue for local government are under utilized.
- The actual collection of property rates is less than twenty percent this reduces the capacity of revenue collection.
- The billing and collection effort have not lived up to expectation.
- The revenue collection rate is very low even though we have employed private partners for the collection.

HOW TO IDENTIFY TAX PAYERS ON THE GROUND

The image illustrates the process of identifying tax payers on the ground. It features a satellite map of a residential area with property boundaries outlined in red. The map is labeled with street names: Ursino Street, Kawawa Road, and Moyo Road. A blue double-headed arrow points from the map to a large 'Info Tool' window on the right. The 'Info Tool' window displays the following property details:

| Field | Value |
|---------------------|------------------------------|
| ID | 55,271 |
| Taxpayer_ID | 198,967 |
| PropRefNo | 111 |
| Owner_s_Name | NATIONAL HOUSING CORPORATION |
| Outstanding_Tax | 96,770 |
| Address | P.O. BOX 2043 DSM |
| City | |
| Property_Ref_Number | DSM004/004/111 |
| Plot_No_ | 004/111 |
| Block_No_ | REGENT EST. |
| House_Number | MKCRGEIO |
| MapID | 65,271 |
| Mtaa | REGENT ESTATE |
| vWard_Name | MIKOCHENI |
| Use_Of_Property | RESIDENTIAL |
| HOUSENO | 0 |
| USE | |
| GROUPNO | |
| MTAA | REGENT ESTATE |
| VATA | MIKOCHENI |
| VAMILIKI | |
| PropRefNo | 111 |
| Zone | 4 |
| Block | 4 |

At the bottom of the 'Info Tool' window, there are navigation buttons: '<<', '>>', and 'List'. The text 'PROPERTY_TAX_REGISTERED_PROPER' is visible at the bottom right of the window.

PROBLEMS

The following reason made us to take this precaution;

1. Inadequate data on all economic activities in the municipal e.g. Hotels, Schools, Apartments, billboards, etc
2. Misclassification of properties and Inappropriate tax assessment basis.
4. Revenue collectors not paying to municipal all monies collected and the absence of tracking mechanisms.
5. Fail to get real owners of the property tend to avoid the payment of property rates.
6. We get difficult to distribute mass bills to the tax payer.
7. Difficult to make follow up to our defaulters since we don't know their location.

INSTITUTIONAL SETTING

Kinondoni Municipal council collect tax under the provision of the Urban Authorities (Rating) Act, i.e. Cap.289 of the R.E 2002 and the Kinondoni Municipality Property Rate (By Laws) of 2002.

Property tax is been paid within period of one year, failure to meet deadline regal regulation will take action that's 25% of the total amount to be paid.

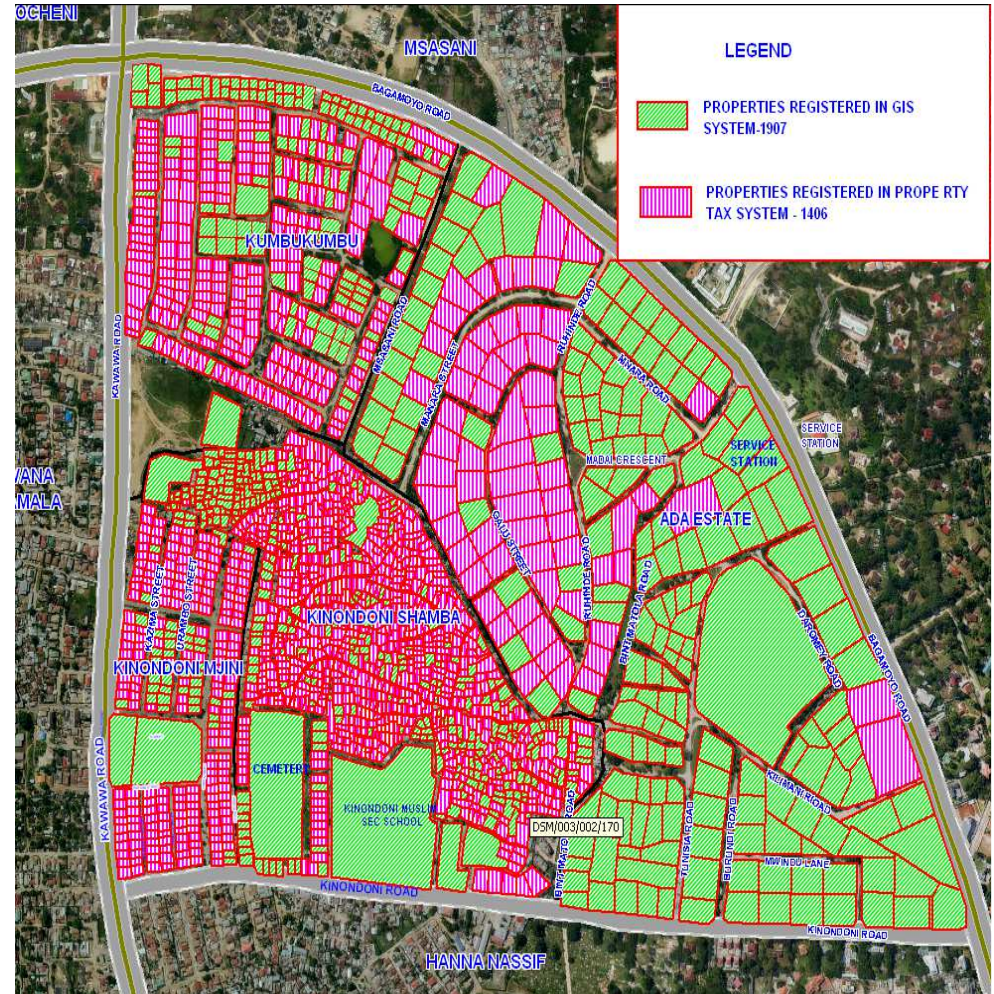
Municipal have set mechanism of tax collection e.g. Municipal treasurer, financial institution and e-payment system.

Outputs

- Ease to identify defaulters from none defaulters
- Dispatch of demand notes and making follow up for tax payer using maps is more easier.
- Reconciliation of what is existing in the ground and what is in the system is now possible by identify who make payment and who didn't by using color.
- It also help us to trucking new building built up and differentiate them using color cord.

Issue of sustainabilty comes up when you have qualified staffs, training, tools and equipment.

ADVANTAGE OF USING GIS IN TAX PAYER IDENTIFICATION

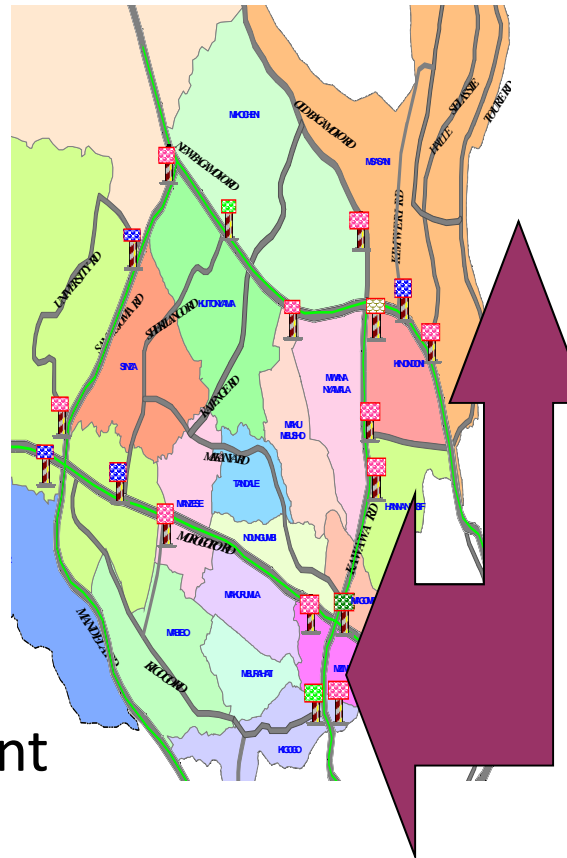


LESSON

THE USE OF GIS IN REVENUE ENHANCEMENT IN PROPERTY TAX AND BILLBOARD

Main lessons learnt in the course of implementation of the GIS as tool help to close check any activities on the land i.e.:

- ✓ Health services.
- ✓ Town planning.
- ✓ Road networks.
- ✓ Market places.
- ✓ Education centers.
- ✓ Play grounds.
- ✓ Open land for investment etc.



| | | | |
|-----------------------|--------------------|------------------|------------|
| ID: | 11 | LENGTH: | 248 |
| X COORDINATES: | 528840 | NUMBER OF SIDES: | 2 |
| Y COORDINATES: | 9244783 | TYPE: | 1 SKAFFING |
| OWNER: | ALLIANCE MEDIA | ANNUAL TAX: | \$3,000.00 |
| ROAD: | KAWAWA ROAD | TAX BALANCE: | \$1,500.00 |
| LOCATION DESCRIPTION: | KISIKO BOUND ABOUT | | |
| WARD: | KISIKO | | |
| CAMERA CLIP NO: | 101-1657 | | |
| WIDTH: | 1.20 | | |

ASANTENI SANA

THANKS